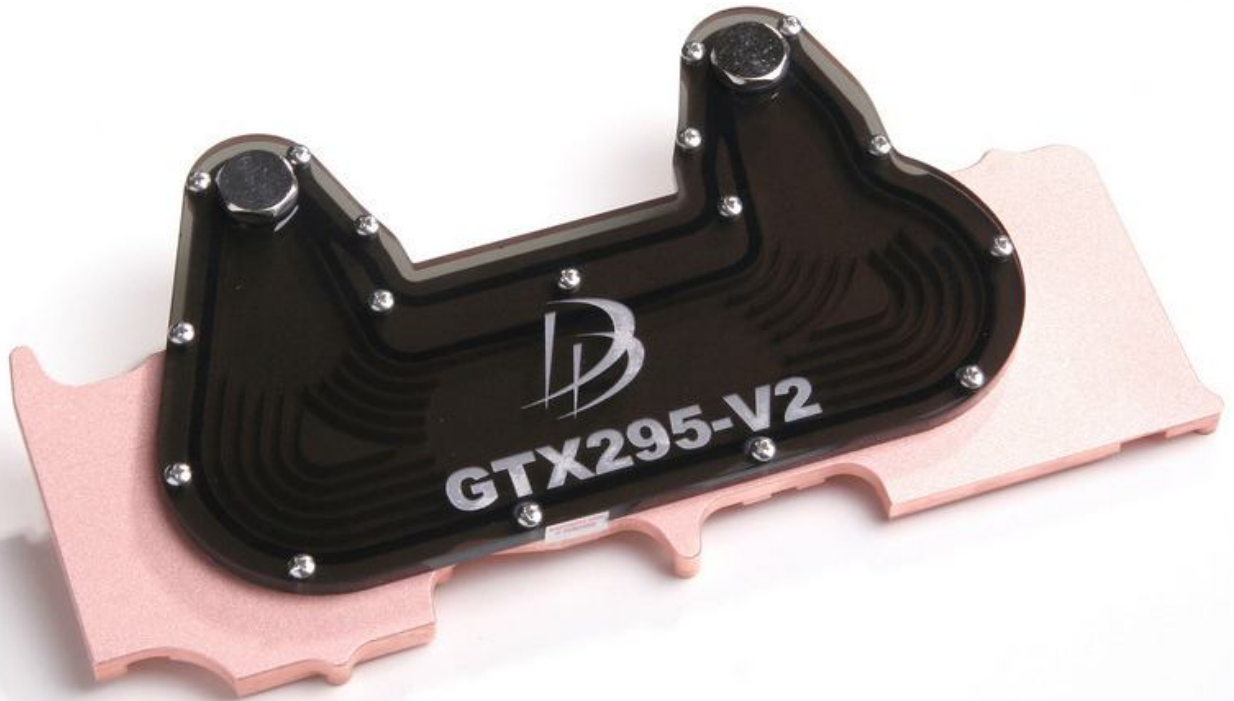


Full cover GPU water block Danger Den GTX295-V2 Installation Guide



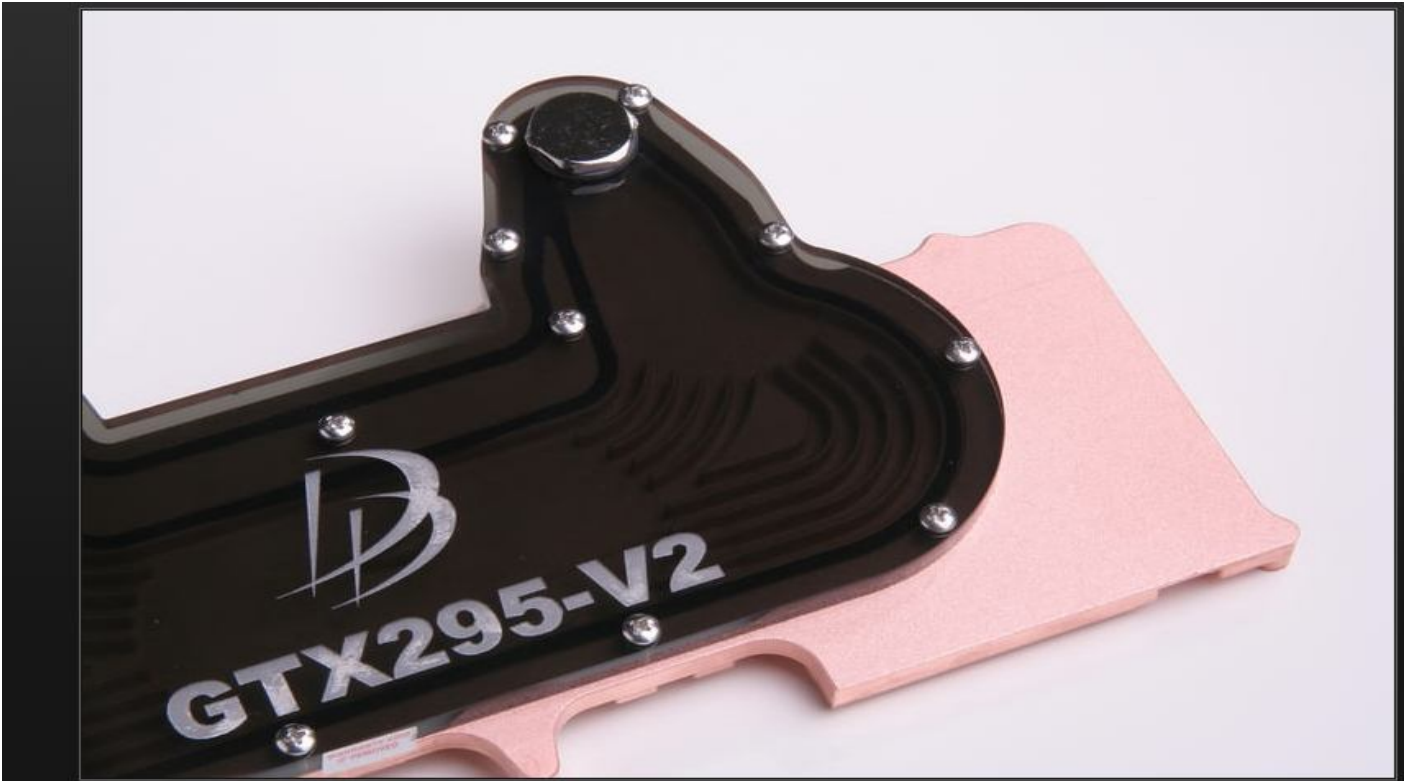
-=MindHunteR=-



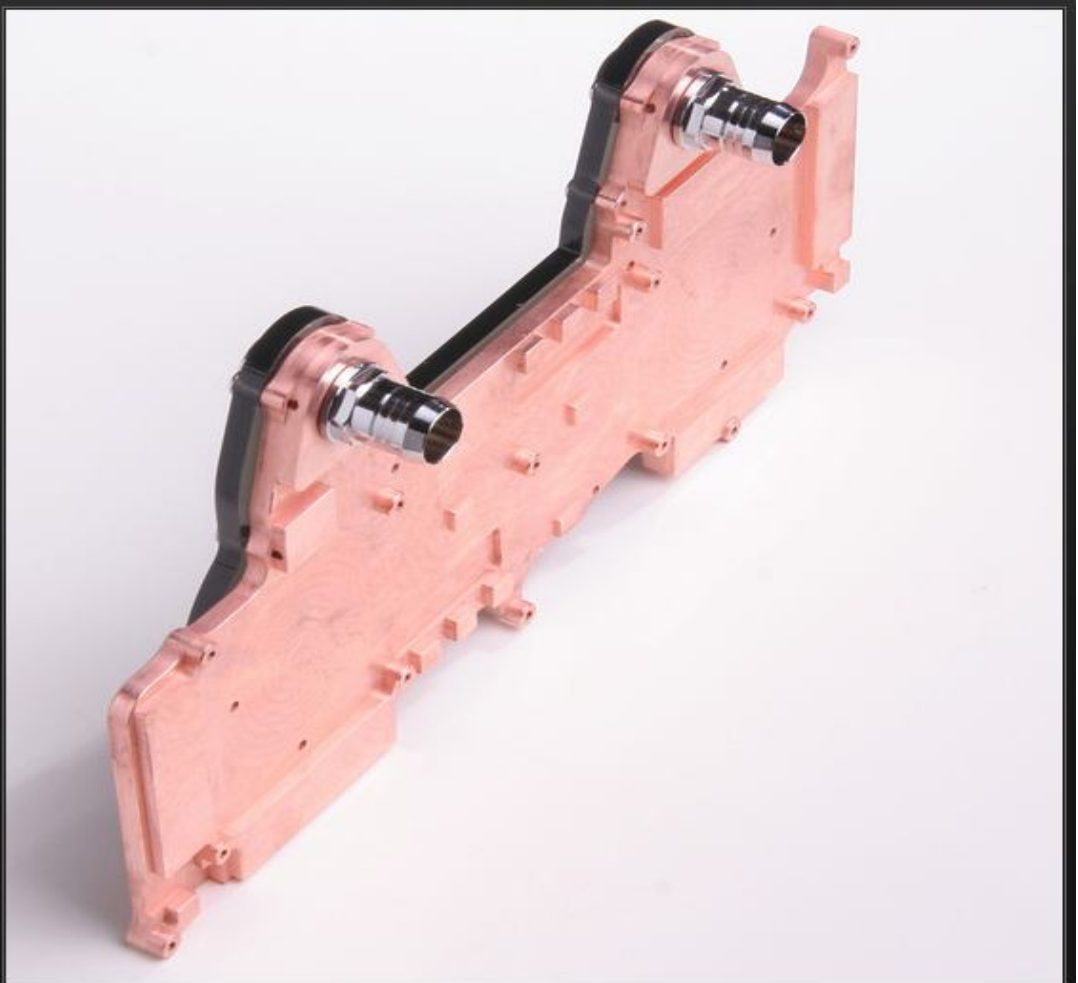
Danger Den GTX295-V2 for the single PCB cards.



Left side close-up. Danger Den GTX295-V2 for the single PCB cards.



Right side close-up. Danger Den GTX295-V2 for the single PCB cards.



Danger Den GTX295-V2 for the single PCB cards base view.



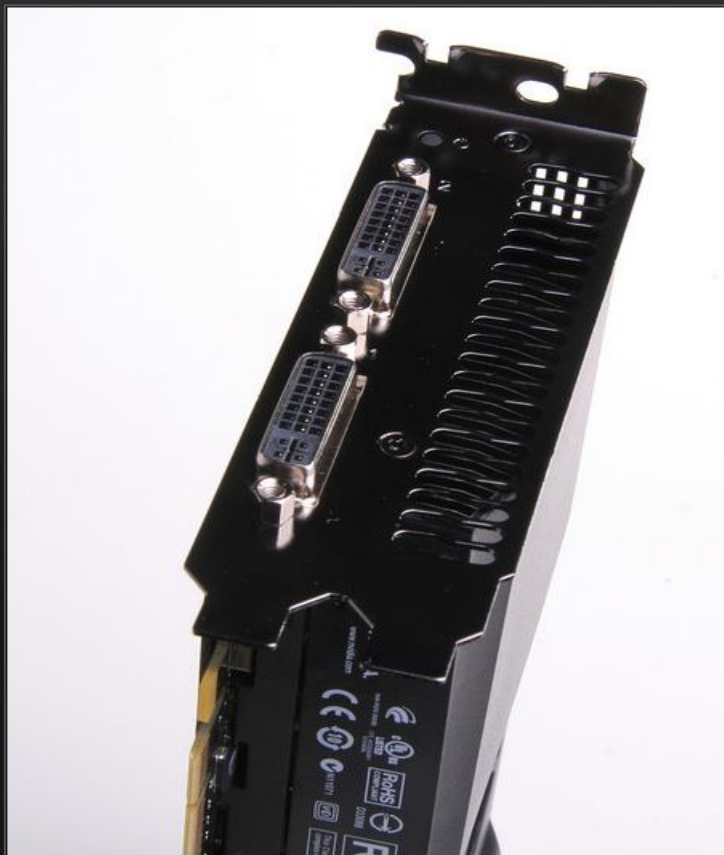
GTX295 completely installed on the card



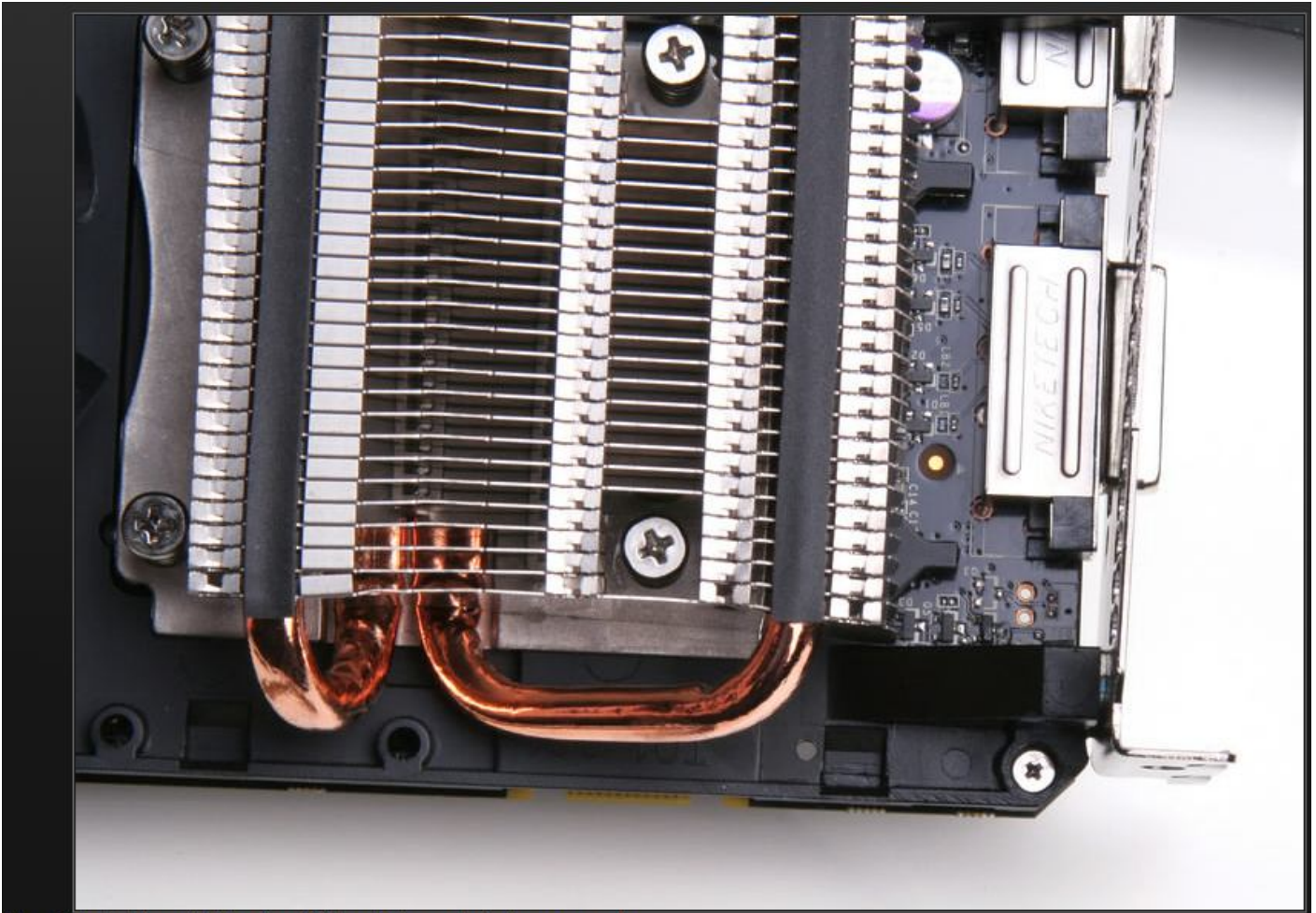
Nvidia OEM heatsink. To remove requires releasing the snaps on the sides and removing the screws.



This backplate and all the screws get reused with the block installation. Be sure to save these!



To remove the heatsink the two screws in the middle need to be removed. Also for a single spaced bracket the 4 monitor bolts need to be removed.



The in the bottom right by the PCI bracket needs to be removed.



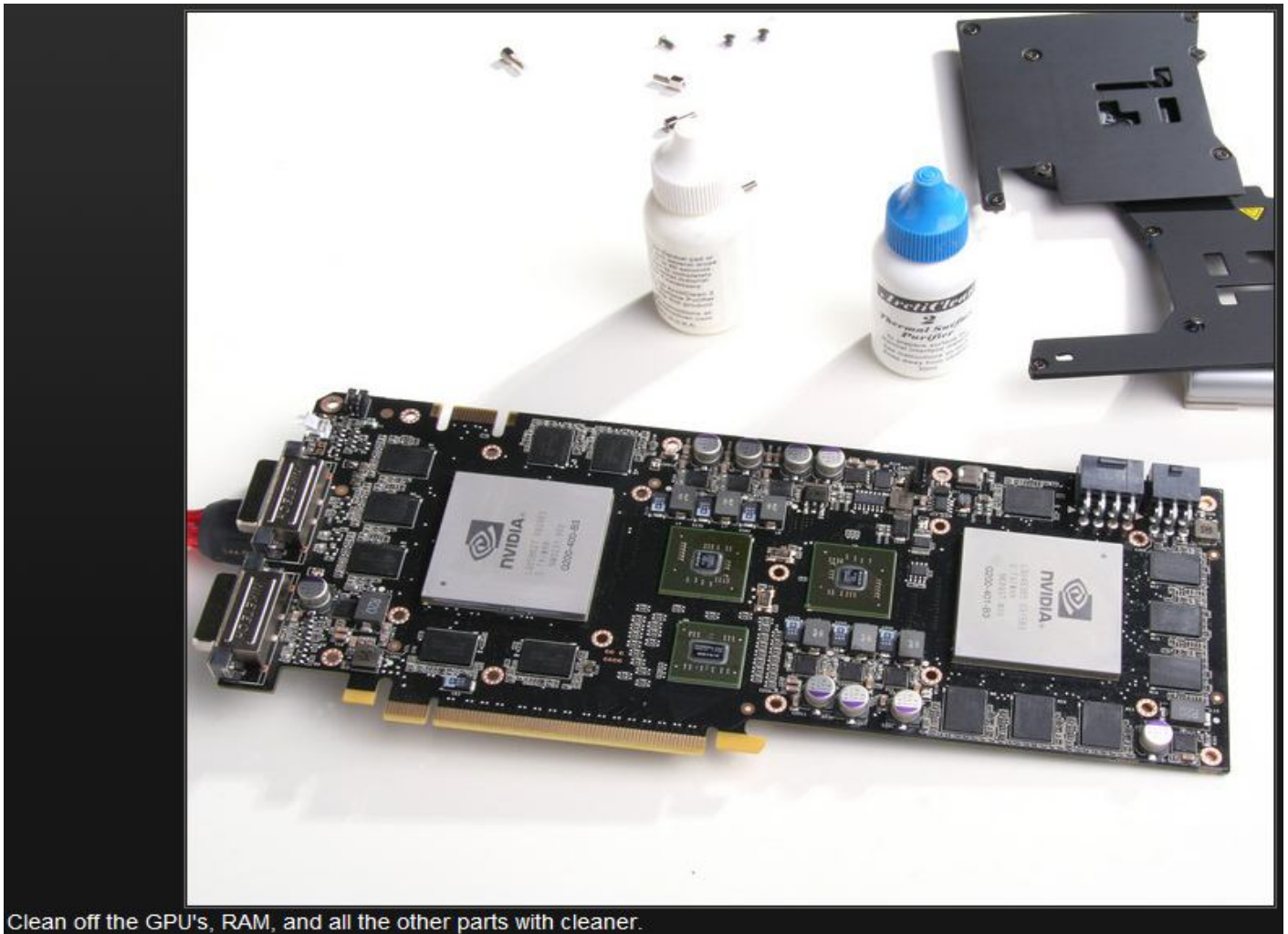
Now you can take the backplates off...remember to save them and the screws!



Don't forget to remove this center screw!



Note the Nvidia symbol and revision numbers...



Clean off the GPU's, RAM, and all the other parts with cleaner.



Locations for the thermal paste and thermal tape.



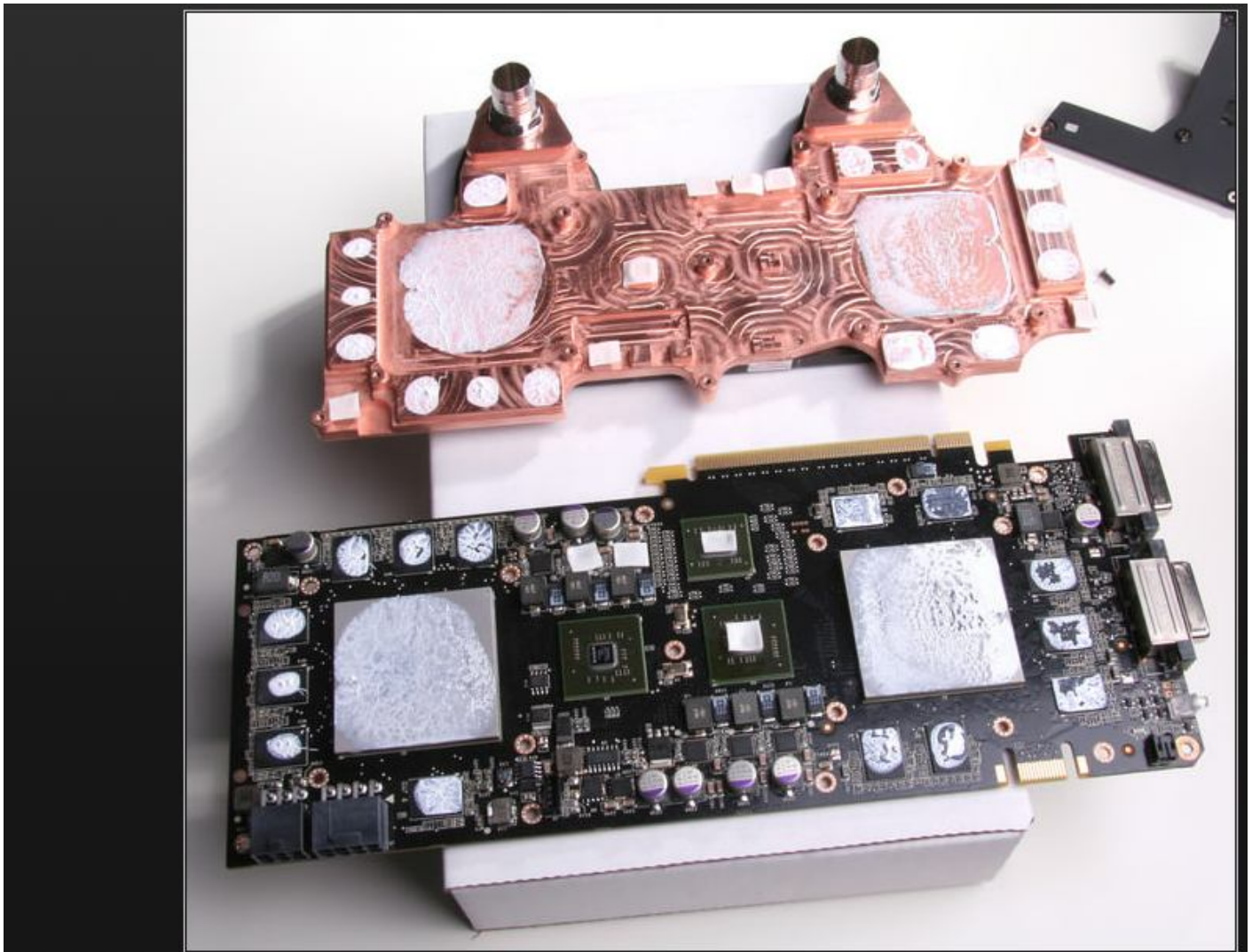
Locations for the thermal paste and thermal tape.



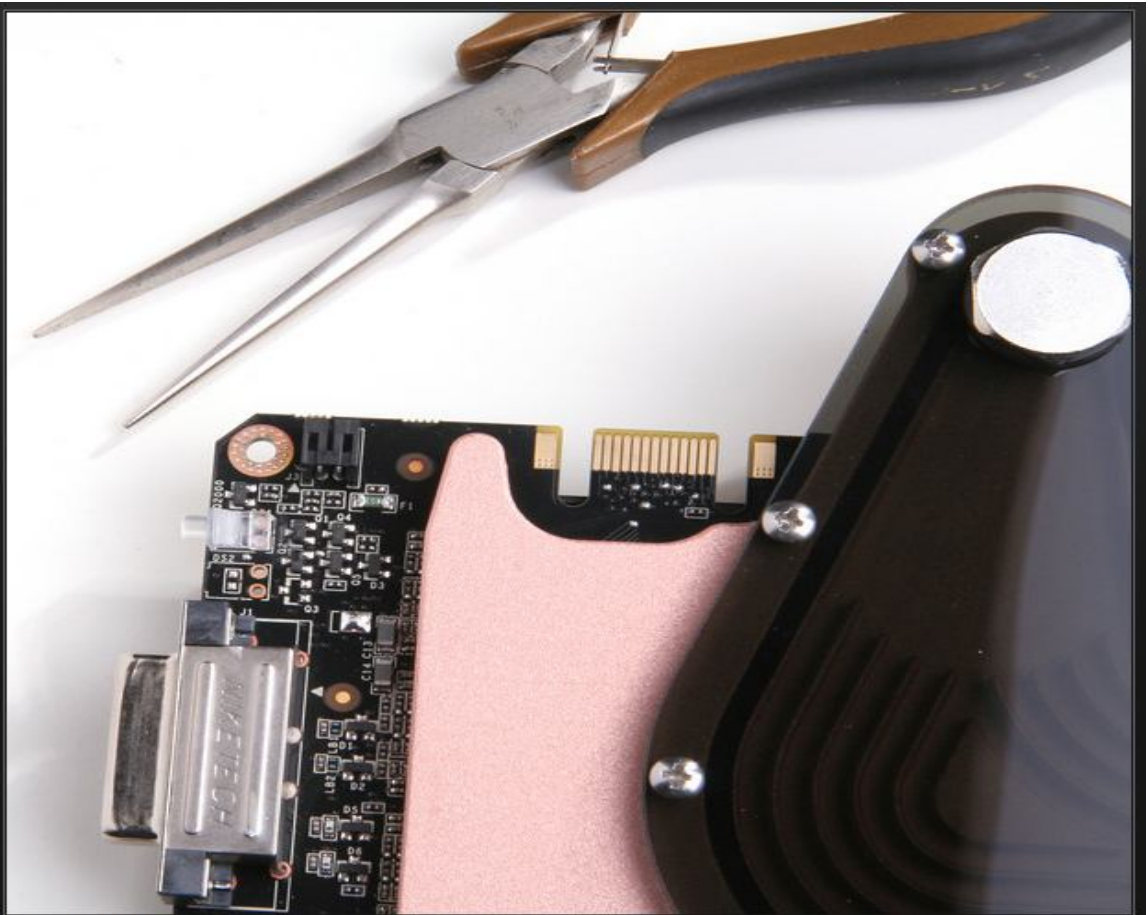
Don't forget the GPU's also...



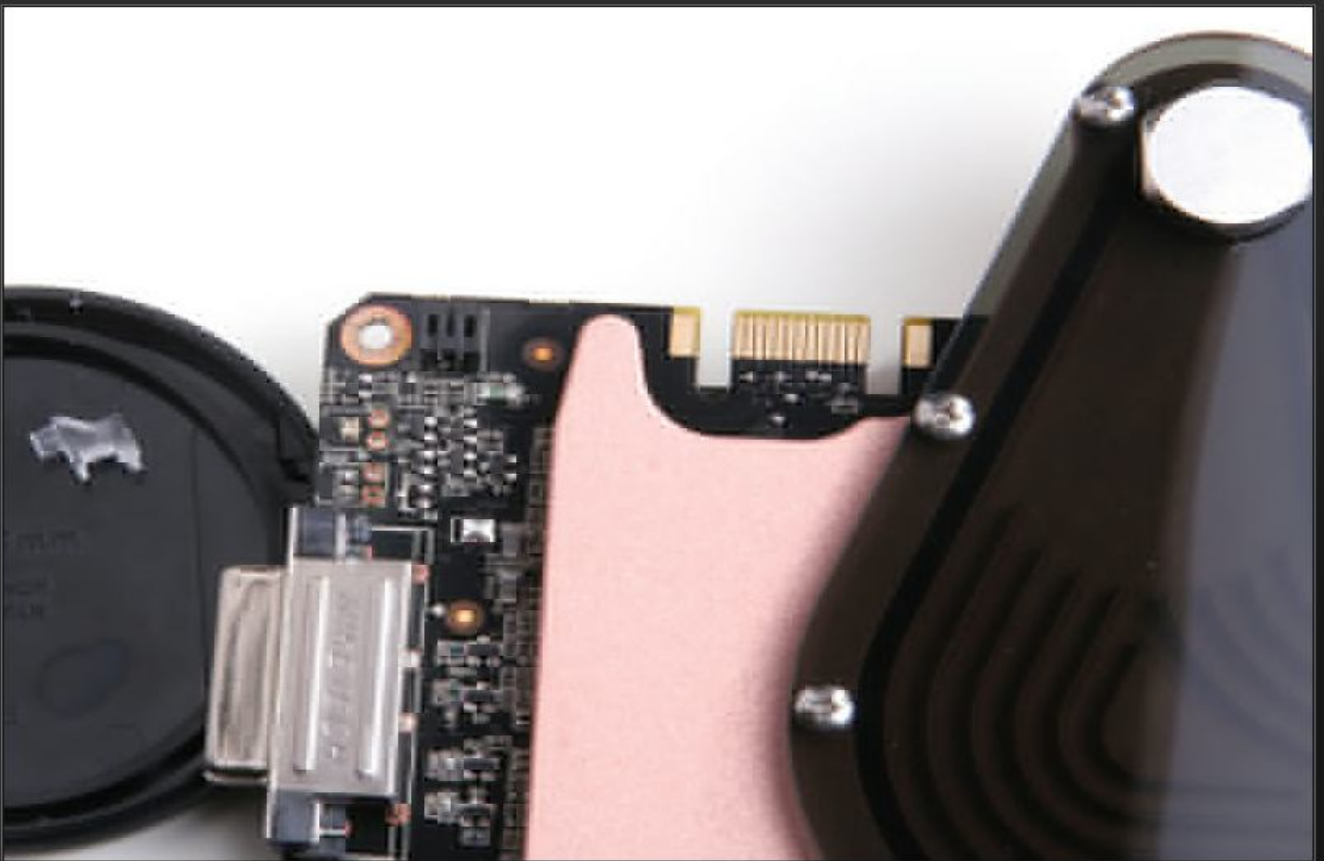
Slide the block under the card and place the backplates back on. Tighten the screws firmly.



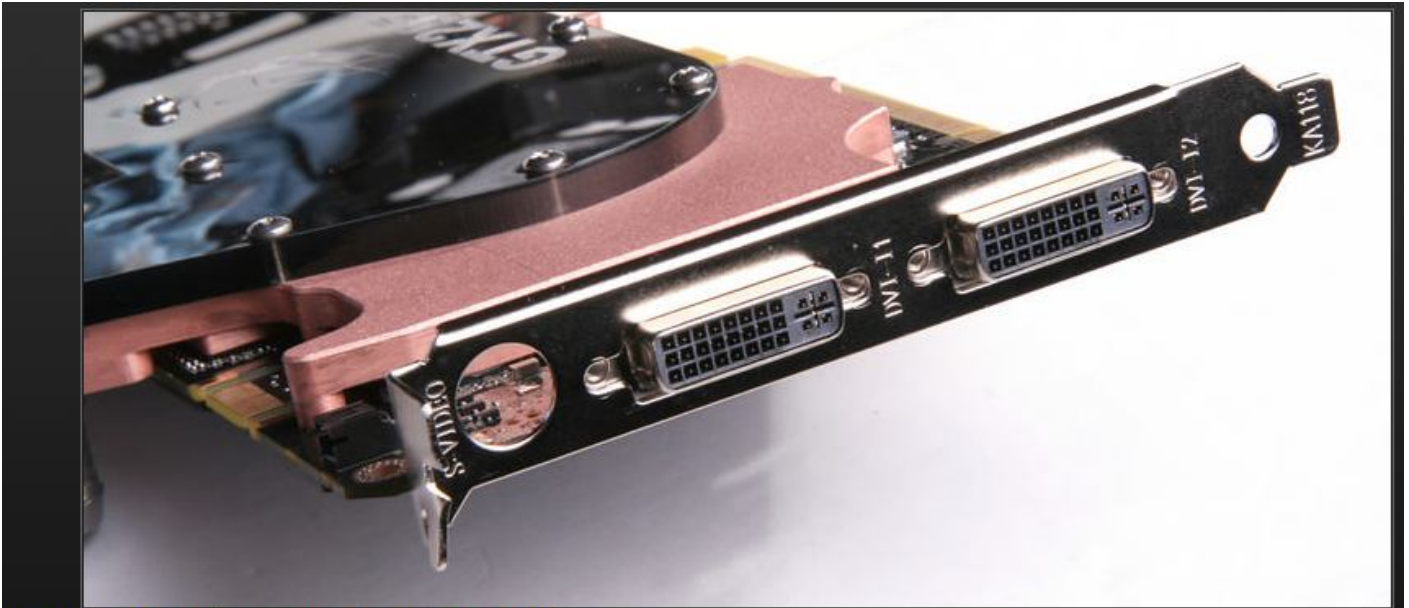
A quick thermal paste check...very nice!



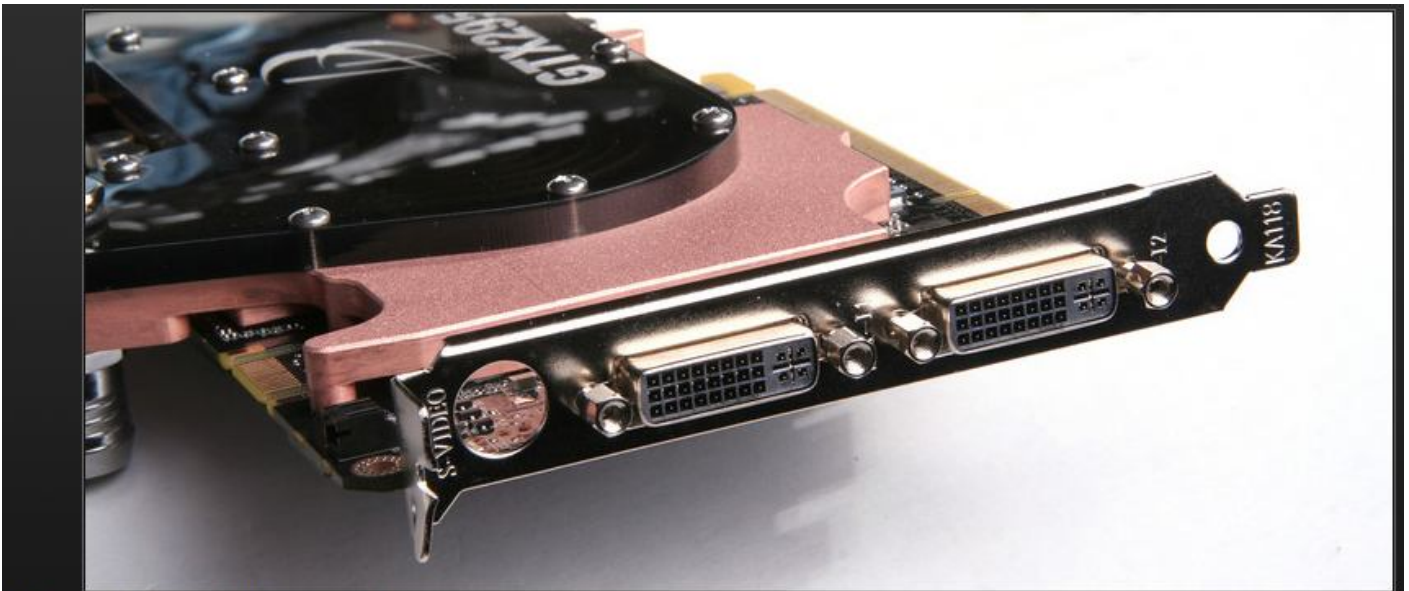
If you want to remove the LED you can simply use pliers. Be careful.



The LED light director is small.



Now you can put on the single slot adapter if you want.



All installed. Ready for the computer!